

# MONTHLY MEMBERSHIP PROGRESS REPORT

LOCATION NIGERIA

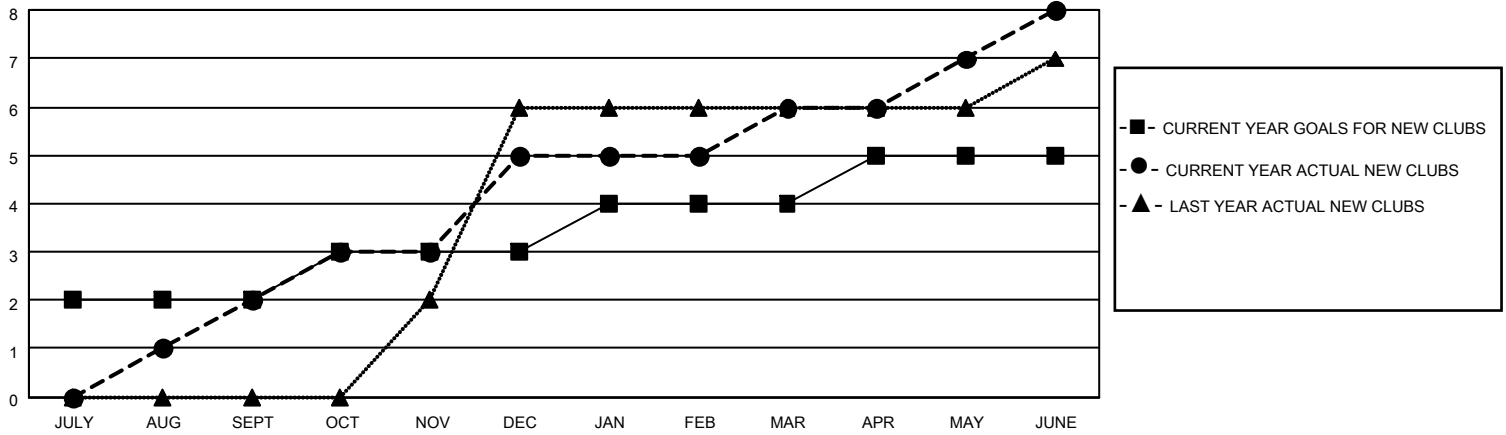
District 404 A2

Results as of: 6/30/2022

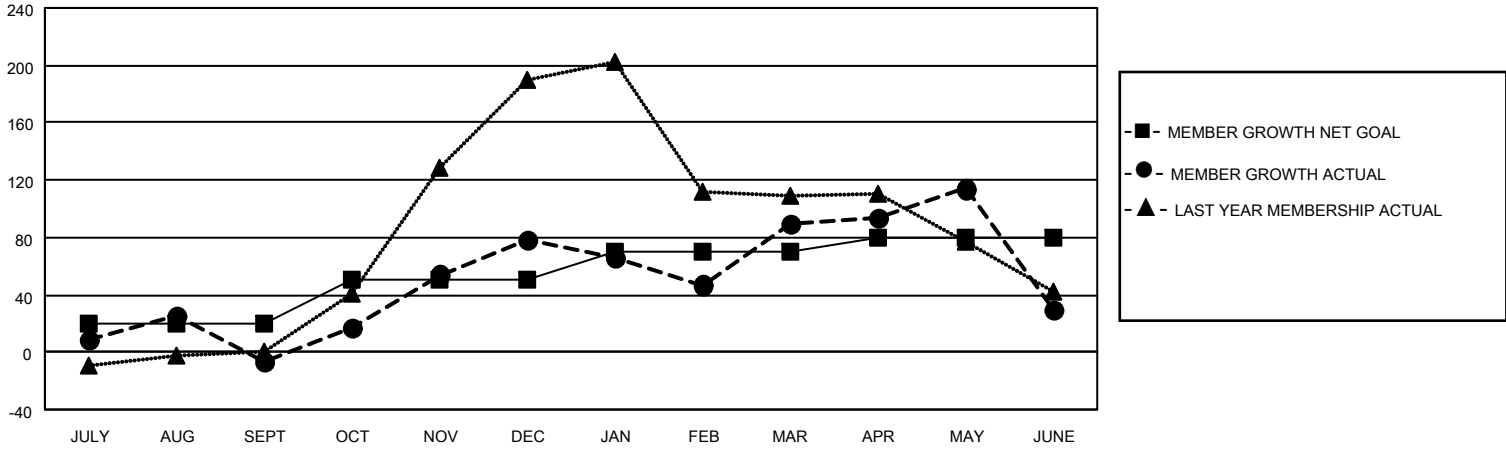
| Clubs                 |               |           |               |
|-----------------------|---------------|-----------|---------------|
| RESULTS FOR 2021-2022 |               |           |               |
| QUARTER               | NEW CLUB GOAL | NEW CLUBS | DROPPED CLUBS |
| JULY/AUG/SEPT         | 2             | 2         | 3             |
| OCT/NOV/DEC           | 1             | 3         | 0             |
| JAN/FEB/MAR           | 1             | 1         | 1             |
| APR/MAY/JUNE          | 1             | 2         | 0             |

| Members               |                        |                      |  |
|-----------------------|------------------------|----------------------|--|
| RESULTS FOR 2021-2022 |                        |                      |  |
| QUARTER               | MEMBER GROWTH NET GOAL | MEMBER GROWTH ACTUAL | DROPPED MEMBERS ACTUAL (including transfers) |
| JULY/AUG/SEPT         | 20                     | 110                  | 109  |
| OCT/NOV/DEC           | 30                     | 168                  | 80   |
| JAN/FEB/MAR           | 20                     | 128                  | 104  |
| APR/MAY/JUNE          | 10                     | 162                  | 212  |

**GOALS AND ACTUAL NEW CLUBS CUMULATIVE**



**GOALS AND ACTUAL MEMBERS CUMULATIVE**



|                         |            |
|-------------------------|------------|
| <b>DROPPED CLUBS: 4</b> |            |
| <b>DROPPED MEMBERS</b>  |            |
| DECEASED                | 8          |
| CLUB CANCELLED          | 101        |
| OTHER                   | 397        |
| <b>TOTAL</b>            | <b>506</b> |

56 CLUBS OF 71 ADDED 1 OR MORE NEW MEMBERS

[CLICK HERE FOR CUMULATIVE MEMBERSHIP DATA](#)

| <u>GENDER DISTRIBUTION</u>             |              |
|--|--------------|
| MALE                                   | 856 (53.47%) |
| FEMALE                                 | 745 (46.53%) |
| NON BINARY                             | 0 (0.00%)    |
| PREFER NOT TO ANSWER                   | 0 (0.00%)    |
| <b>TOTAL FAMILY UNIT MEMBERS</b>       | <b>264</b>   |
| <b>FAMILY MEMBERS PAYING HALF DUES</b> | <b>168</b>   |